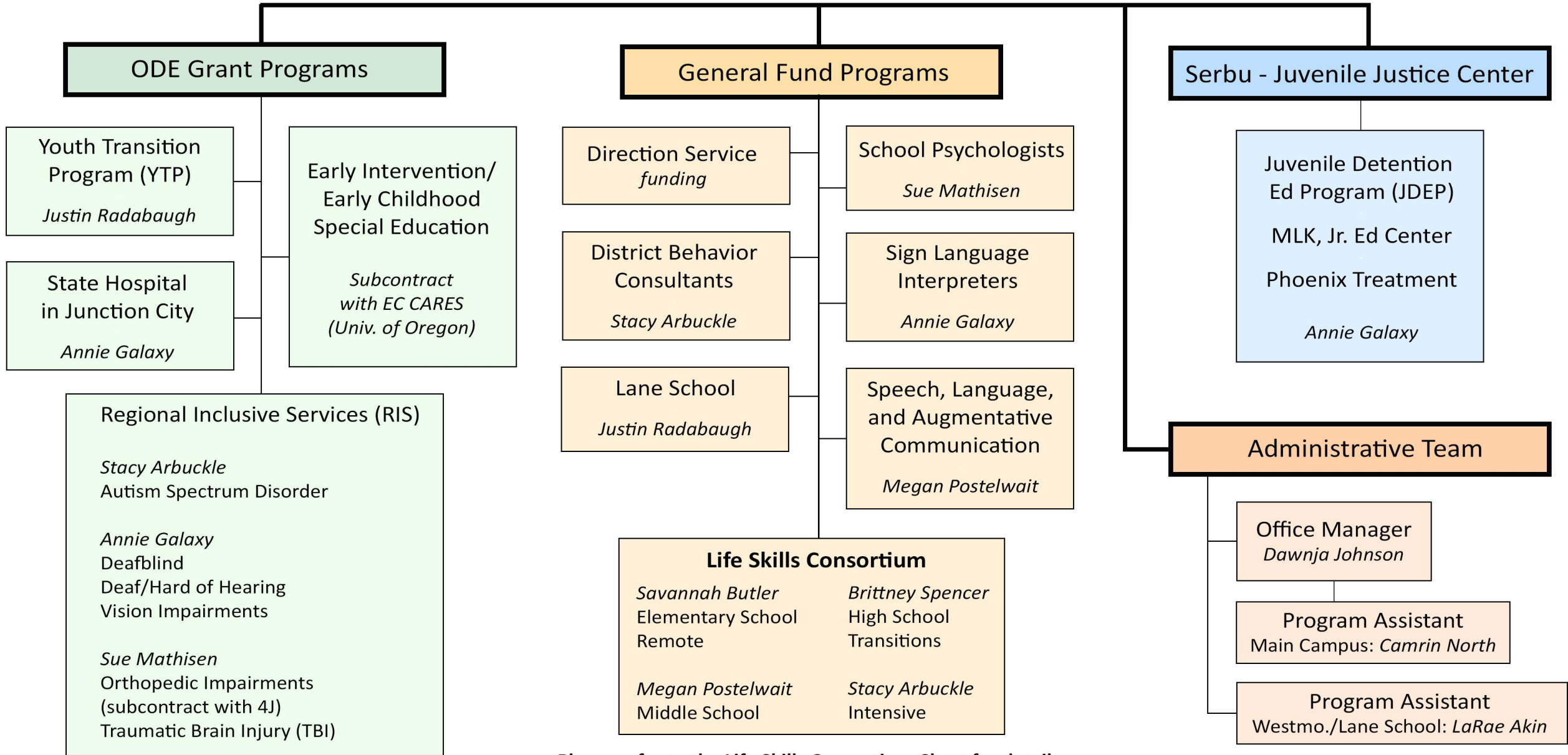


2022-23

Lane ESD Special Education Service Area

Sue Mathisen: smathisen@lesd.k12.or.us 541.461.8374
 Annie Galaxy: agalaxy@lesd.k12.or.us 541.461.8377
 Justin Radabaugh: jradabaugh@lesd.k12.or.us 541.463.8502
 LaRae Akin: lakin@lesd.k12.or.us 541.463.8500
 Dawnja Johnson: djohnson@lesd.k12.or.us 541.461.8251
 Camrin North: cnorth@lesd.k12.or.us 541.461.8357

Executive Director
 Sue Mathisen



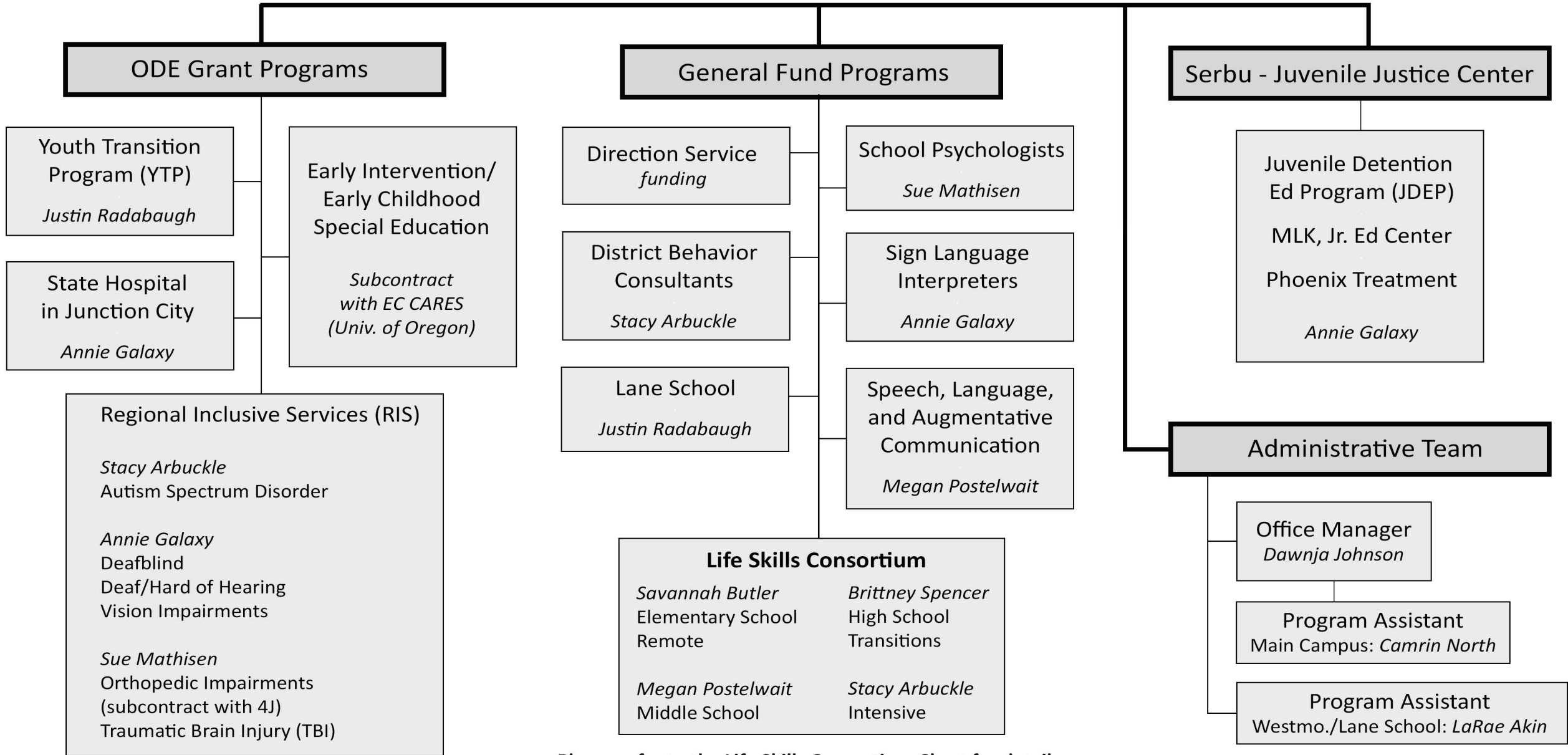
Please refer to the Life Skills Consortium Chart for details.

2022-23

Lane ESD Special Education Service Area

Sue Mathisen: smathisen@lesd.k12.or.us 541.461.8374
 Annie Galaxy: agalaxy@lesd.k12.or.us 541.461.8377
 Justin Radabaugh: jradabaugh@lesd.k12.or.us 541.463.8502
 LaRae Akin: lakin@lesd.k12.or.us 541.463.8500
 Dawnja Johnson: djohnson@lesd.k12.or.us 541.461.8251
 Camrin North: cnorth@lesd.k12.or.us 541.461.8357

Executive Director
 Sue Mathisen



Please refer to the Life Skills Consortium Chart for details.

Life Skills Consortium

| | |
|--|--|
| Savannah Butler Elementary School Remote | Brittney Spencer High School Transitions |
| Megan Postelwait Middle School | Stacy Arbuckle Intensive |